

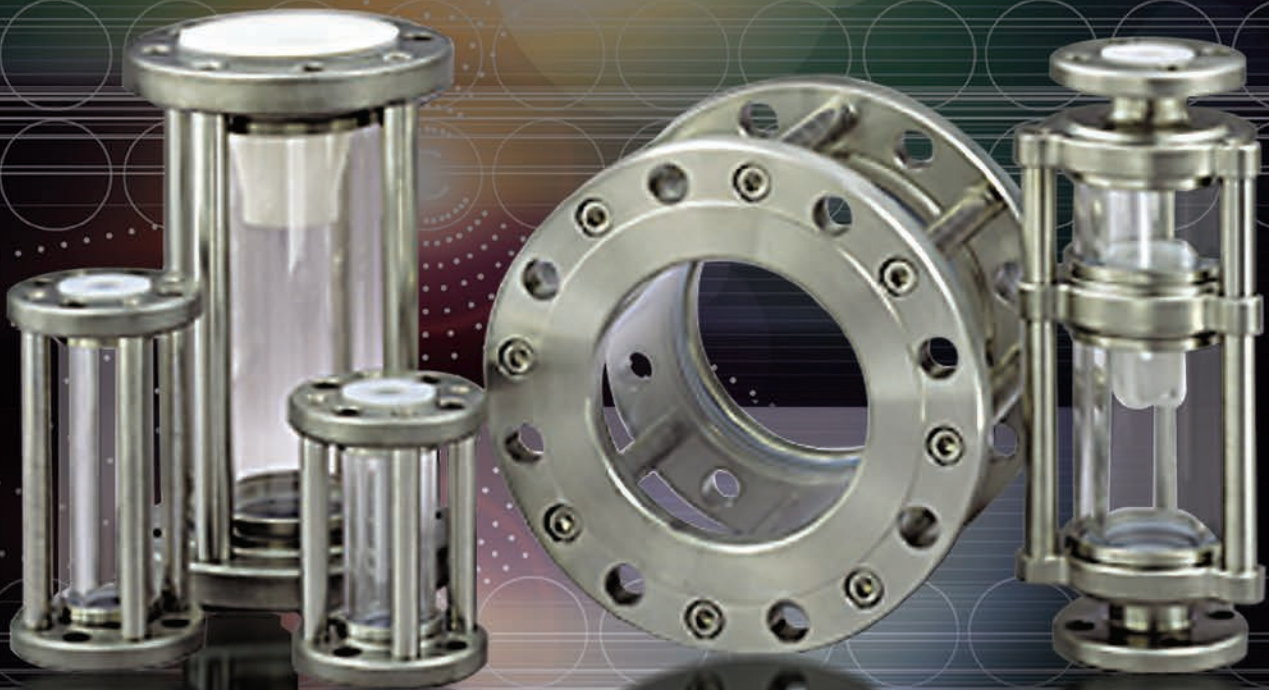
FLO-VU[®]

Sight Flow Indicators

**Guaranteed Not To Leak*



COMPLIANT

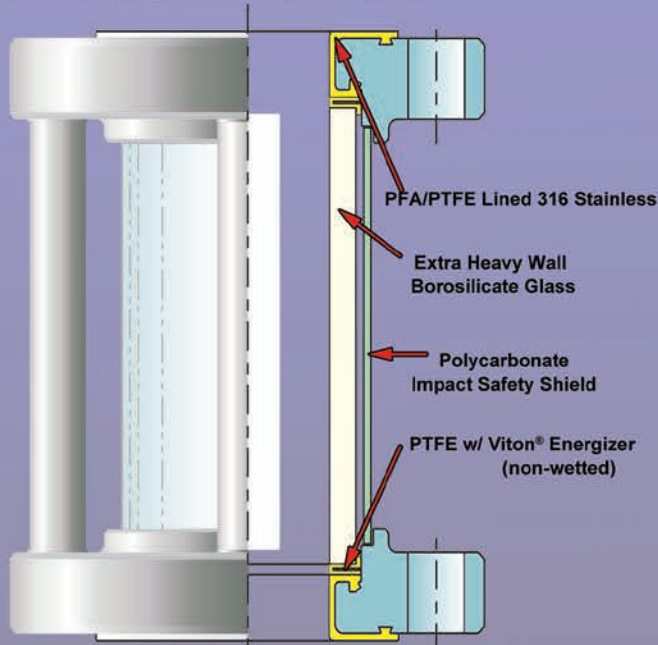


**High Pressure & Temperature Rated
Excellent Safety & Reliability**

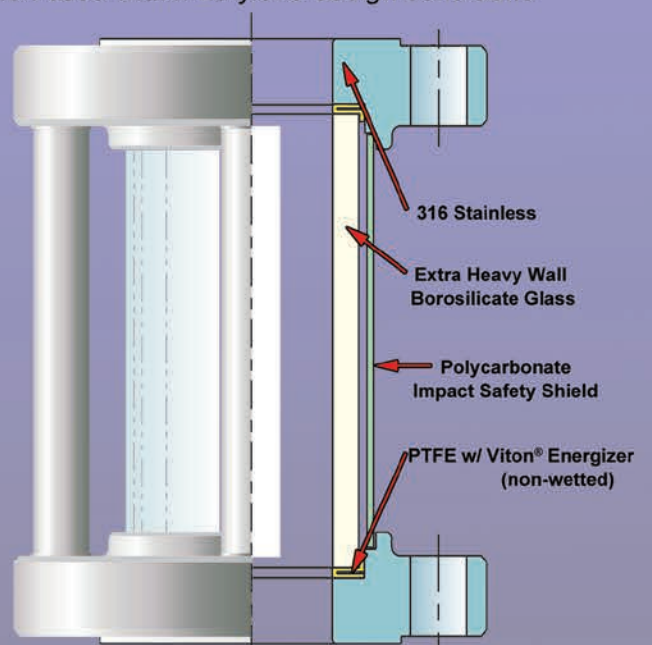
FLO-VU®

***Guaranteed Bubble-Tight**

**When used within Ethylene design conditions*



Model 360L - PFA/PTFE Lined



Model 360M - Unlined Version

Standard Features

- Size Range

1" - 12" up to 50" Long

- Pressure Rating

1/2" to 6" full vacuum to 150 psig

8" - 10" full vacuum to 75 psig

12" full vacuum to 50 psig

- Operating Temperature

(-)20°F to (+)400°F

- 100% Tested

Each unit is subjected to a 1.5X MAWP hydrostatic pressure test and a 100 psig helium mass spectrometry test before shipment. (Helium test on 1/2" - 6" only)

- Energized Seal Design

PTFE / Viton® Energizer gasket provides a secure, bubble-tight seat even in applications with extreme thermal cycling. Silicone energizer option for fluid services over 350°F

- Lexan®/ Polycarbonate Impact Shield

A Lexan outer safety shield with an unobstructed 360° view is provided on FLO-VU 360L and 360M to protect the glass from external damage and to provide scatter protection

- PFA/PTFE and Glass Wetted Surfaces

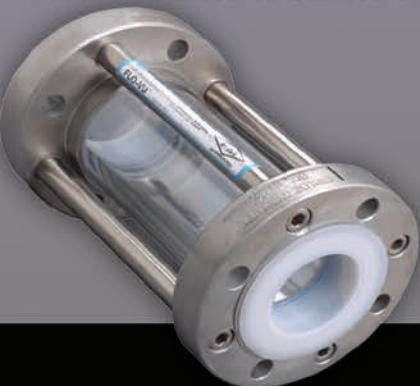
PFA/PTFE and borosilicate glass wetted surfaces offer high temperature with maximum corrosion resistance and absolute product purity

- Rugged Construction

All FLO-VU sight indicators have heavy-duty tie rods and flanges to limit deformation under heavy external loads and reduce glass stress

**FLO-VU®
Standard**

PFA/PTFE Lined or Unlined 316 S.S.



FLO-VU®

**Durcor® Composite
Flanges**



FLO-VU®

**Double-Sure™
Double Contained**



FLO-VU®

**Pure-Vu™
Sanitary Tri-Clamp**

